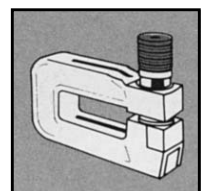
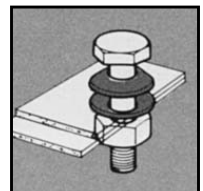
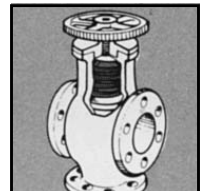
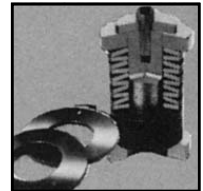
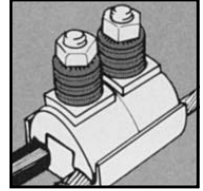
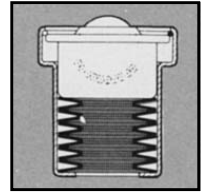
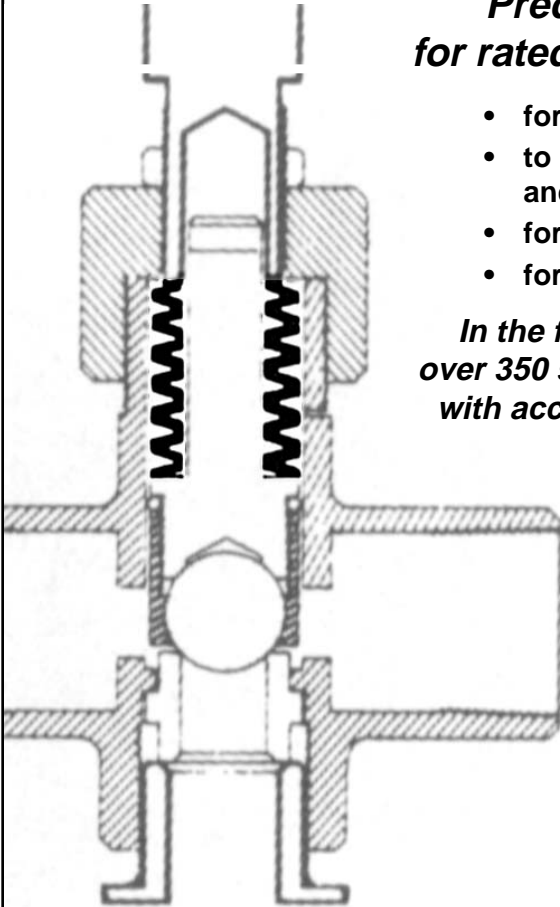


***Predictable performance
for rated load at given deflection***

- for high loads in limited space
- to replace coil springs for economy and improved design
- for use with bolted sections
- for use with ball bearings

***In the following pages, we have listed
over 350 sizes of DISC SPRINGS, complete
with accurate dimensional and technical
data.***

FINISH: All sizes are normally stocked in 'self-colour' (unplated). Plating and/or special finishes are NOT recommended due to risk of mechanical impairment.



CATALOG 13

D