

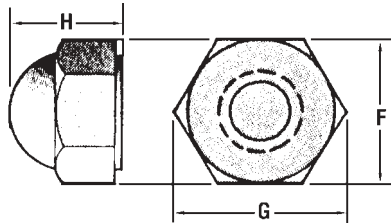
Moulded NYLON

Type 6/6 UL94V2

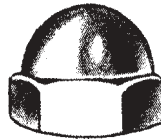
CORROSION-RESISTANT

INCH SIZES

Preferred for use on ceramic, glass, enamel, and irregular surfaces.



NATURAL COLOUR



CAP NUTS

(ACORN, DOME, OR CROWN NUTS)

Closed-end style

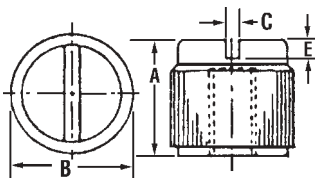
SPAENAUR No.	THREAD	Dimensions			Unit Pkg.
		F	G	H	
210-101	4-40	.250"	.275"	.280"	100
210-102	6-32	.305"	.350"	.325"	100
210-103	8-32	.330"	.385"	.375"	100
210-104	10-24	.365"	.420"	.400"	100
210-105	10-32	.365"	.420"	.400"	100
210-106	1/4"-20	.425"	.510"	.475"	100
210-107	5/16"-18	.500"	.575"	.530"	100
210-108	3/8"-16	.560"	.630"	.620"	100
210-109	1/2"-13	.750"	.860"	.810"	50
210-110	5/8"-11	.925"	1.050"	1.000"	50

SLOTTED THUMB NUTS

INCH SIZES

NYLON 6/6

NATURAL COLOUR



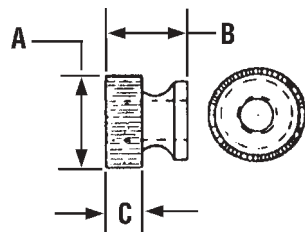
SPAENAUR No.	THREAD	Dimensions				Unit Pkg.
		A	B	C	E	
210-115	4-40	.280"	.317"	.039"	.045"	100
210-116	6-32	.334"	.348"	.044"	.051"	100
210-117	8-32	.378"	.381"	.049"	.059"	100
210-118	10-24	.357"	.412"	.056"	.068"	100
210-119	10-32	.357"	.412"	.056"	.068"	100
210-120	1/4"-20	.370"	.478"	.070"	.088"	100

KNURLED THUMB NUTS

INCH SIZES

NYLON 6/6

NATURAL COLOUR



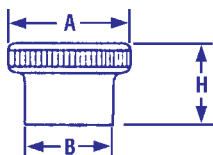
SPAENAUR No.	THREAD	Dimensions			Unit Pkg.
		A	B	C	
210-125	4-40	.300"	.280"	.120"	100
210-126	6-32	.360"	.275"	.125"	100
210-127	8-32	.425"	.305"	.140"	100
210-128	10-24	.425"	.325"	.140"	100
210-129	10-32	.425"	.325"	.140"	100
210-130	1/4"-20	.540"	.365"	.155"	100

METRIC - KNURLED NUTS

Open End Style

All items furnished in Metric Regular COARSE Thread only.

Styles



DIN 466



DIN 467

Style	Dia.	Pitch	DIMENSIONS (Max.) (in mm)			SPAENAUR NUMBERS			UNIT PKG.
			H	A	B	STEEL N.P.	BRASS	STAINLESS STEEL A2 (304)	
Knurled NUTS	M3	0.50	7.5	12	5.85		149-040		100
	M4	0.70	9.5	16	7.8		149-041		100
	M5	0.80	11.5	20	9.8		149-042		50
	M6	1.00	15.0	24	11.75		149-043		50
FLAT Knurled NUTS	M3	0.50	3.0	12			149-050		100
	M4	0.70	4.0	16			149-051		100
	M5	0.80	5.0	20			149-052		50
	M6	1.00	6.0	24			149-053		50

CATALOG 13