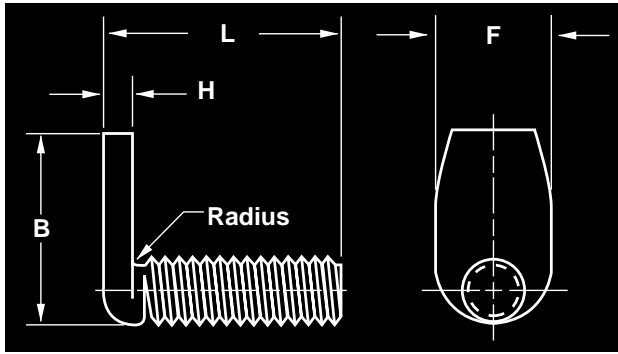
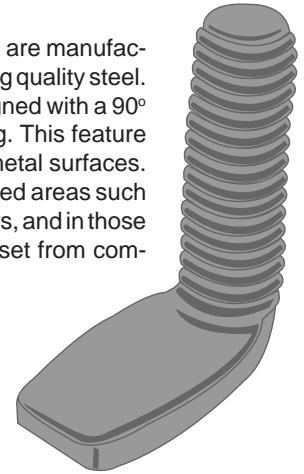


## SPOT WELD SCREWS "LJ" SERIES



The LJ Series, Spot Weld Screws are manufactured from low carbon, high welding quality steel. These spot weld screws are designed with a 90° plain spade head for spot welding. This feature allows for welding to or through metal surfaces. The product can be used in confined areas such as narrow channels, walled corners, and in those applications requiring threads offset from component surfaces.



Not Plated

Grey area on chart below indicates the available size range of LJ Spot Weld Screws.

**SPAENAU Numbers** listed below can usually be shipped immediately from stock.

Can be manufactured to meet specific requirements in production run. Prices available upon request.

Unit Package 100

Size	#6	#8	#10	#10	1/4"	1/4"	5/16"	5/16"	3/8"	3/8"
Head Width (F)	.218"	.250"	.312"	.343"	.375"	.406"	.437"	.500"	.531"	.593"
Head Thickness (H)	.047"	.062"	.062"	.062"	.094"	.094"	.125"	.125"	.156"	.156"
Head Length (B)	.562"	.625"	.687"	.687"	.750"	.750"	.875"	.875"	1.000"	1.000"
Threads Per Inch	32	32	24	32	20	28	18	24	16	24

Overall Length (L)	ORDER BY SPAENAU NUMBERS LISTED BELOW									
3/8"		573-111	573-112							
1/2"		573-100	573-113	573-103	573-104					*LN Series with single projection under head.
9/16"										
5/8"		573-101			573-105		573-109			
3/4"		573-120	573-110		573-106		573-115		573-127*	
7/8"					573-114					
1"		573-102		573-117	573-107		573-119			
1-1/8"										
1-1/4"					573-108					
1-3/8"										
1-1/2"		▲573-061							573-116	
1-3/4"										
2"					573-118		▲573-121			
2-1/4"										
2-1/2"										
2-3/4"										
3"										
		▲ SS Series (Not Gripco)								

Typical weld settings for use with C-1010 steel only. Thickness range of steel sheets, 24 gauge to 6 gauge. Steel sheets must be free from scale, rust and dirt and be uncoated.

SIZE	WELD TIME IN CYCLES	WELD PRESSURE IN POUNDS	WELD CURRENT IN AMPS
#6	4 to 10	300 to 700	8,000 to 14,000
#8	5 to 10	300 to 700	8,000 to 14,000
#10	5 to 10	400 to 800	9,000 to 15,000
1/4"	6 to 12	500 to 900	12,000 to 18,000
5/16"	8 to 14	800 to 14,000	14,000 to 20,000
3/8"	10 to 25	1,000 to 2,000	15,000 to 24,000

CATALOG 13

B