



DIN 6368

Socket wrench
Clé à douille
pg. P118



DIN 6450

Parallel Pin Punches
Chasse - goupilles
pg. P122



DIN 6451

Crosscut Chisels
Bédanes
pg. P123



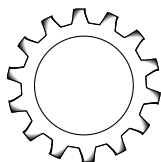
DIN 6453

Flat Cold Chisels
Burins plat
pg. P121



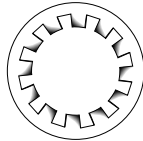
DIN 6458

Taper Punches
Chasse - pointes
pg. P122



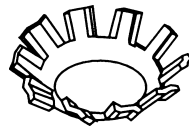
DIN 6797A

External Tooth Lockwashers
Flat
Rondelles de blocage dentées
pg. D33



DIN 6797J

Internal Tooth Lockwashers
Flat
Rondelles de blocage
dentées
pg. D33



DIN 6797V

External Tooth Lockwashers
90° Countersunk
Rondelles de blocage
dentées
pg. D33



DIN 6798A

External Overlap Tooth
Lockwashers
Rondelles blocage dentées
pg. D34



DIN 6798J

Internal Overlap Tooth
Lockwashers
Rondelles de blocage
dentées
pg. D34



DIN 6798V

External Overlap Tooth
Lockwashers - 90° Ctsk.
Rondelles de blocage
dentées
pg. D34



DIN 6799

Retaining Rings - External
Bagues de retenue - extérieur
pg. E149



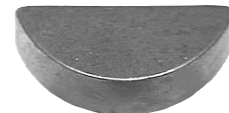
DIN 6880

Square and Rectangular
Key Stock
Clavettes d'arbre
pg. E123



DIN 6885A

Shaft Keys
Clavettes d'arbre
pg. E120 ~ISO 2491



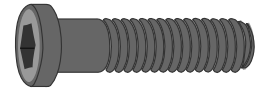
DIN 6888

Woodruff Keys
Clavettes «Woodruff»
pg. E118 ~ISO 3912



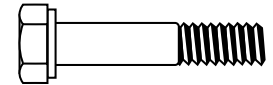
DIN 6911

Short Hex Key
with Pilot Point
Clé hexagonale courte
avec pointe-pilote
pg. P10



DIN 6912

Hex Socket Cap Screws - Low
head style with pilot recess for
wrench key
Vis à tête à 6 pans creux
pg. B258



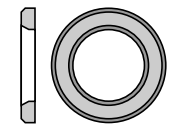
DIN 6914

High-Strength Hex Head Bolts
Boulons de précision
hexagonaux
pg. B203 ~ISO 7412



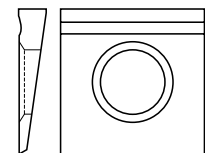
DIN 6915

Heavy Hexagon Nuts
Écrous hexagonaux
pg. C21 ~ISO 7414



DIN 6916

Flat Washers - Hardened
for use with DIN 6914
Rondelles en acier
pg. D18 ~ISO 7416



DIN 6917

Square Beveled Washers -
14% Slope for "I" Beams,
Countersunk
Plaquettes obliques carreau
pg. D76